

# TIMBERLINES



## Witness the tear down of Timberline's Winter Entrance

—page 3

Major improvements on the way for the Wy'East Day Lodge

—page 6

Come lend a hand at the the FOT Work Day on August 12

—back cover





## A FEW WORDS FROM OUR FOT PRESIDENT

Hello, friends. We are looking forward to fall and the annual meeting, dinner and auction and with this comes the election of officers and our opportunity to meet the enthusiastic members who make Friends of Timberline the vital organization that it is. The Board is working hard to live up to Friends' mission statement: "To preserve and conserve Timberline Lodge, protect its historical integrity and communicate the



spirit of its builders by providing counsel and raising funds and coordinating community efforts to accomplish these goals". As always, we embrace our partners RLK and Co. and the US Forest Service, to keep strengthening our mutual interests. This has been and continues to be a winning formula for our mutual success.

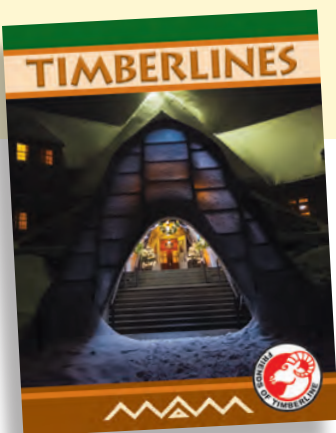
The Strategic Planning Committee is very active, working with members of our Congressional constituency to alert

them about vital issues at the Lodge including funding for significant deferred maintenance projects that exceed our ability to fund or advocate for private partner funding. The dialog with staff from the offices of Senators Ron Wyden and Jeff Merkley continues as we search for Federal funding options.

Board members are meeting twice a year with key Forest Service officers to stay current with ongoing issues that affect our mutual interests. These six-month meetings help keep this vital connection and flow of information so that we are immediate with substantive issues, and this interaction keeps our relationship strong and resilient. Friends also has representatives at the monthly and less formal 106 meetings with key RLK personnel and the Forest Service so that we can stay current with physical plant concerns. This helps us focus on future support needs.

The Interpretive Committee is working closely with RLK and the Forest Service to help insure that there are eager and knowledgeable leaders to guide visiting groups who want to learn more about the art, history and cultural significance of this great lodge and rich historical area. The Art, Archives, and Restoration Committee continues to enlarge and catalog its collection of prints, documents and photographs that chronicle the myriad events, activities, and personalities that surround this magical place.

In addition to two landscaping projects in the planning process, this is a summary list and by no means covers all the varied work and efforts of our group. And most important.... this happens only because of the generous support of you, our members. We look forward to hearing from all of you and hope we see many of you at the festive auction and annual dinner in October.



**Oops—photo credit correction needed for the cover image on the last issue of Timberlines!**  
That fabulous photo of "Timberline's Winter Entrance Lit from Within" was captured by Lodge employee **Harold Cooley**. He was incorrectly identified in the Winter 2018 issue.

## TIMBERLINES

**Publisher/Editor—**

**Friends of Timberline**

PMB 219

5331 SW Macadam Ave., Ste. 258

Portland, Oregon 97239

Phone: 503-295-0827

Email: fot1@comcast.net

Website: friendsoftimberline.org

**Graphic Design/Production**

Megan Hewitt Lukens

**Photography**

Linn Adamson

Randi Black

John Burton

Doris Ingram

Aaron Johanson

Moshe Lenke

**Contributing Writers**

Mike Gentry – *Editor*

Linn Adamson

Cal Bertram

Randi Black

Sarah Munro

Grace Saad

Dick Spies

**Printed by** GISI Marketing Group

### CONTENTS

Words from our FOT President	2
FOT Board of Directors	2
Winter Entrance Coming Down	3
Curator's Corner	4
Museum at Warm Springs	4
Watercolor Conservation	5
Join Friends of Timberline	5
Archive Tidbits	6
New Look for the Day Lodge	6
Annual Meeting Invitation	8
Board Member Spotlight	8
Mountain Music Festival	9
FOT Merchandise	10
Friends We Will Miss	11
FOT Work Day August 12	12

### FOT Board of Directors 2017–2018

#### Officers

**Cal Bertram**—President

**Lynda O'Neill**—VP

**Mike Gentry**—Secretary

**Charles Matschek**—Treasurer

#### Partner Representatives

**R.L.K. and Company**

**Jon Tullis**—Dir. Public Affairs

**Linn Adamson**—Curator

**U.S. Forest Service**

**Rachel LaMedica**—

Partnership Coordinator

#### Staff

**Randi Black**—Office Manager

#### Board Members

**Gene Bentley**

**Diane Crane**

**Brent Dahl**

**Michael Drake**

**Laura Henderson**

**Darin Ingram**

**Jeff Jaqua**

**Peter Meijer**

**Schatzie Perkins**

**Sarah Munro**

**Grace Saad**

**Dick Spies**

**Brooke Turner**

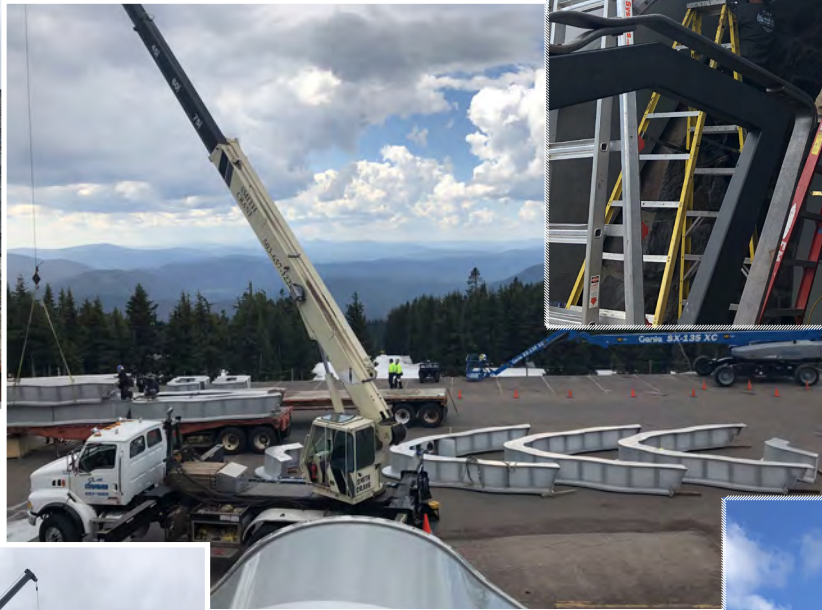
**Anita Walters**

[www.friendsoftimberline.org](http://www.friendsoftimberline.org)



# WHAT GOES UP DOES COME DOWN!

Many of us have had occasion to appreciate the beauty and utility of the Lodge's "new" Winter Entrance, but haven't most of us also pondered on just how they do that? Fortunately for us, Timberline's Director of Marketing, John Burton, was on hand for the disassembly of the structure this spring. These images give an idea how the big puzzle goes together, and comes back down for compact storage. The entrance was inspected and has stood up well.





# CURATOR'S CORNER

In a different twist to “Hood to Coast”, a textile exhibit at the Latimer Quilt and Textile Center in Tillamook will feature samples of forty years of textiles restoration efforts at the Lodge. “Timberline Textiles—in the Spirit of the Original” will showcase contemporary examples of Timberline’s hand hooked rugs and handwoven upholstery as well as a few of the original 1937 WPA hand applied drapery panels along with some carved animal head corbels, a few furniture pieces and hand forged ski boot scrapers. If you are in the area from mid-September through October, this event is worth attending.

Work continues at the Lodge. The GT18 funding budget combined with Forest Service and RLK and Company funds have earmarked around \$90,000 this year for restoration of Art and Craft related efforts. Approximately sixty preapproved projects await attention in four categories. Textile projects involve production of woven and appliqued fabrics. Artwork projects include conservation of oil and watercolor paintings and hand carved exterior animal heads. Furnishings work covers couches, chairs, tables and historic venetian blinds repairs. Structural needs are addressed with attention to Day Lodge, guestroom and other floor and wood surface conditions as well as addition of forged iron ADA handrails at Silcox Hut. Friends of Timberline continues its efforts as well, with visions of future landscaping projects, help with conservation of the wood murals and attention to the needs of the winter entrance. Visitors to the Lodge can enjoy a vibrant Forest Service summer tours program and view the Builders of Timberline video. We hope you enjoy your visit and experience on the mountain.

Linny Adamson  
Timberline Lodge Curator

## Museum at Warm Springs Anniversary

The Museum at Warm Springs recently celebrated its 25th Anniversary on April 14 at a well-attended dinner at the World Forestry Center in Portland. In 1993, Timberline Lodge Curator Linny Adamson and RL “Dick” Kohnstamm represented the Lodge at the ribbon cutting dedication at Warm Springs, and continuing the long association of those organizations, RLK and Company sponsored a table at the recent anniversary celebration. In attendance were Linny and “Ranger Jerry”, Dr. Gerald Prescott who has given countless hours as a tour guide at Timberline Lodge. Among the other honorees, that night, Jerry was welcomed to the Museum’s Board of Regents. Linny has juried many Tribal Art Shows at the Museum, along with Museum Curator Natalie Moody, and Director Carol Leone, who has announced her retirement.



*Linny Adamson and long-time Lodge volunteer tour guide Jerry Prescott enjoy the anniversary dinner.*



*Girls just having fun at Timberline on a bluebird day. Left to right: Di Miller, Liza Mickle, Lori Vranizan and Julie Goodman.*



# JOIN FRIENDS OF TIMBERLINE AND BE A PART OF HISTORY.



## Timberline WPA Watercolor Botanicals Conservation

The first inventory of Timberline's botanicals since the end of the Works Progress Administration (WPA) was undertaken by a committee of the Junior League of Portland in 1977. Most of the over 150 pieces were in good condition, though it was noted that not all of the paper mats were acid-free and that many showed stains from glass cleaner which discolored them. Over the years, most have been replaced under the direction of Lodge Curator Linnny Adamson and the Forest Service. Detailed conservation work continues. Archival glass has replaced the original glass and pencil outlines on the picture mats have been redone. In 2013, historian Sarah Munro, past FOT Board member Lenore Martin and paper conservator Elisabeth Chambers took each botanical out of its frame to assess conservation needs. Many pieces received necessary restoration treatment by Elisabeth between 2015 and 2017.

The original 1937 frames have been restored by Rogelio and Kathy Presbitero at Western Picture Frame Company. This long-time family business is expert in restoration and has done work for many organizations including the Portland Art Museum and the Oregon Historical Society. Western Picture Frame also restored works in the Ray Atkeson and Lawrence Hudetz photographic collections at the Lodge.

### Membership Type

- New**
- Renewal**
- NEW OPTION!**  
**Automatic Renewal**

### Membership Level

- Friend**
- \$50    \$100\*    \$250
- Preservationist**
- \$500    \$1000 or more\*\*

\*\$100 or higher levels earn a 10% discount at the Wy'East Store and 10% off Timberline guest room rates each time you stay (mid-week/non-holiday periods)

\*\*\$1,000 or higher donors earn an additional gift of two tickets to the FOT Annual Meeting, Dinner and Auction. (First Saturday in October.) Minimum value \$170

Your gift is tax deductible to the full extent of the law. Friends of Timberline is a member of the Oregon Cultural Trust. Your support is needed and appreciated.

The Friends of Timberline  
Ram's Head Pin is available  
as our membership thank  
you at all levels.



### Send Gift?

- Yes
- No,  
thank you

### Member Info

Name: \_\_\_\_\_  
 Address: \_\_\_\_\_  
 City: \_\_\_\_\_  
 State: \_\_\_\_\_ Zip Code: \_\_\_\_\_  
 Phone: \_\_\_\_\_  
 E-mail: \_\_\_\_\_

### Payment Info

**One-time payment:**  
 Amount: \$ \_\_\_\_\_     Check     Credit Card

**Automatic Renewal:**  
 Don't let your membership lapse, sign up for automatic annual renewals. Your credit card will be charged on the day you choose. Any changes in the future can be quickly made by calling our office.

Please begin my automatic annual contribution of: \$ \_\_\_\_\_  
 Begin date: \_\_\_\_\_

Credit Card #: \_\_\_\_\_  
 Expiration Date: \_\_\_\_\_    CVS code: \_\_\_\_\_  
 Name on Card: \_\_\_\_\_  
 Cardholder signature: \_\_\_\_\_

### My Company will match my contribution.

Company name: \_\_\_\_\_

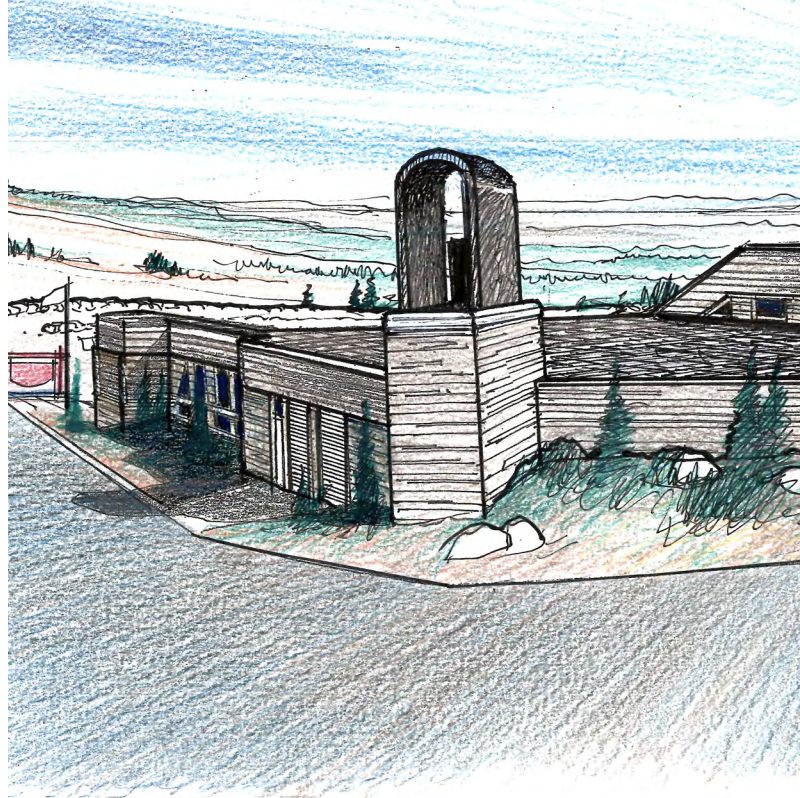
Mail to:

**FRIENDS OF TIMBERLINE**

PMB 219, 5331 SW Macadam Ave., Ste. 258 • Portland, Oregon 97239



Drawings by Dick Spies



The Wy'east Day Lodge, dedicated in 1984, is dramatically showing the effects of over three decades of snow, ice and wind. Designed to be visually subordinate to Timberline Lodge, the Day Lodge was constructed with concrete walls and roof and was recessed into its site so as to not block views to and from the historic Lodge. It also was shaped so drifting snow would not pile up in its shadow and block the adjacent parking lot.

Despite its protective thick concrete walls and low profile, recent studies reveal major signs of erosion and cracks in walls along with severe deterioration of many windows and frames. The conclusion of these studies is to add a new layer of cladding over the entire building and replacement of all windows and frames. A separate study called for the complete replacement of the roof membrane and the reinstallation of protective concrete pavers similar to the original design. These pavers had been removed several years ago leaving the roof membrane directly exposed to the harsh environment of winter snow and ice along with wind-blown summer pumice.



## Friends of Timberline Archive Tidbits

Friend of Timberline Moshe Lenske donated a treasure trove of nearly 2,000 historic negatives to the Friends of Timberline archive. The negatives date from 1939 to 1941 and 1946. The gap reflects the period of World War II when the Lodge was closed. The photographers of most of the images are unknown, but Jim Nutter, then publicity director of Timberline Lodge, is identified as the photographer of some of the photos.

Subjects focus on people and activities at Timberline. Other subjects include nearby sites in the Mt. Hood National Forest such as Ramona Falls or the Pioneer Woman's Grave, and activities such as horseback riding.

These two images illustrate racquet sports enjoyed in days past at the Lodge. The game in the enclosed court is paddle tennis, played using the rules of tennis but on a smaller court and with a small solid paddle using a reduced-pressure tennis ball. In the second image, two couples are playing badminton on a stone terrace at the west end of the Lodge. The couple facing the camera is Mr. and Mrs. Jim Yates, and the couple facing away is Mr. and Mrs. Fred Sprowles.

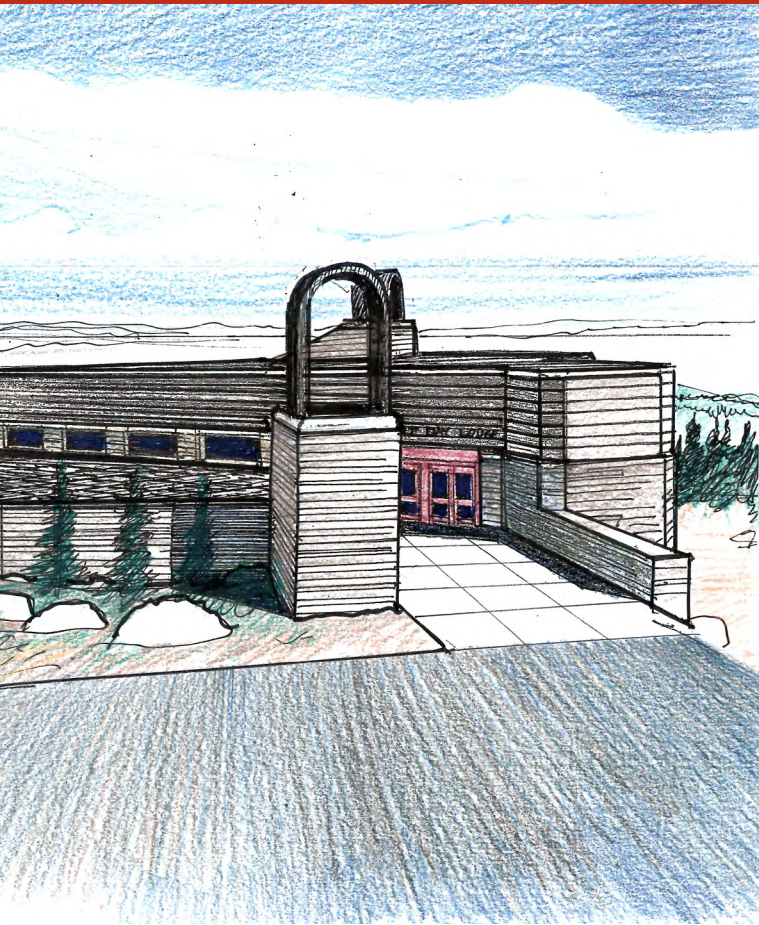
Sarah Baker Munro  
Chairman, FOT Art, Archive,  
and Restoration Committee





# R THE DAY LODGE

by Richard K. Spies

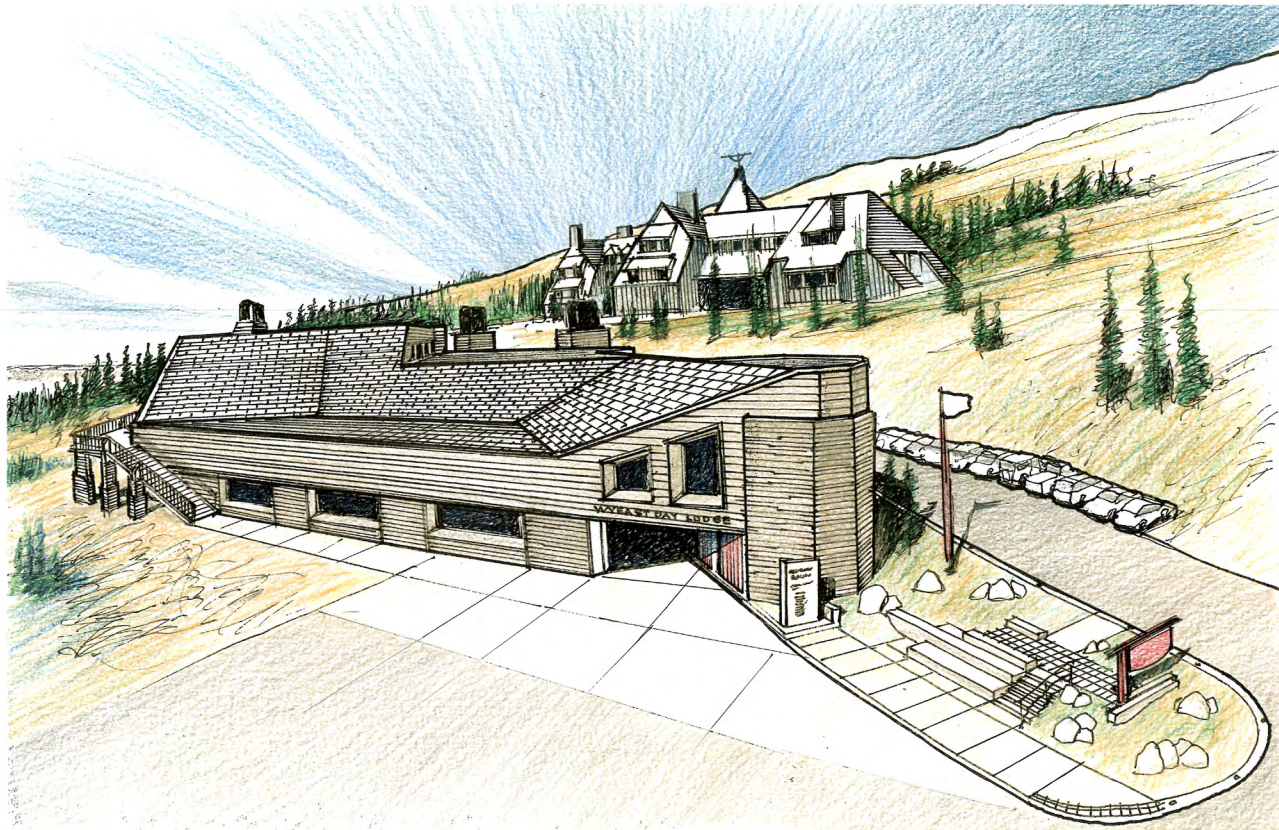


*View from the Lodge looking east, showing redesigned chimneys, roof pavers, board formed concrete panels along with horizontal beveled siding.*

Design documents recently completed by a team headed by Mackenzie and including RDH Building Science as building envelope consultant defined a two phase solution. The first phase will provide a new roof and redesigned chimneys. This includes the two main air supply and exhaust chimneys that will be reduced slightly in size while maintaining the same classic shape of the signature chimneys on Timberline Lodge. The second phase proposes a new exterior cladding that will not only provide much needed protection but will also visually soften the monolithic concrete exterior of the Day Lodge. The upper portions of the exterior will be clad in a wide metal horizontal beveled siding similar to the wood siding on the east wing of Timberline Lodge. The lower portions and areas covered by snow in the winter will be covered with new board former concrete panels. All new cladding will also provide new insulation. All windows and frames will be replaced. These improvements will extend the life of the building for future generations to enjoy and will visually make the Day Lodge a more compatible neighbor to Timberline Lodge.



*View from the southeast, showing future improvements to the climber's entrance, new windows and graphics at the entrance, beveled siding, board formed concrete panels and roof concrete pavers.*





# This is your invitation to FOT's 2018 Annual Meeting, Auction and



You are invited to the Friends of Timberline Annual Meeting, Dinner and Auction.  
**Saturday, October 6, 2018 at Timberline Lodge**

Tickets \$85 per person/\$95 per person after September 21, 2018  
To secure your dinner reservations please send your check and reservation card to:  
(Sorry we can't take credit cards for the dinner).

Friends of Timberline 7310 SW Corbett Ave Portland, Oregon 97219

Be sure to list the names of your guests and any food allergy issues.  
Your ticket is the name tag given to you the day of the event.  
If you join or upgrade your Friends of Timberline Membership at the \$1000 level,  
two tickets to the event are free.

—Schedule of Events—

Friends of Timberline Annual Business Meeting • 3:30 p.m. • Barlow Room  
Silent auction and hosted wine bar • 4:30–6:30 p.m. Raven's Nest  
Celebrate the Northwest Dinner • 6:45 p.m. Mt. Hood/Jefferson Room



## BOARD MEMBER SPOTLIGHT - DARIN INGRAM By Grace Saad



*A duded-up Darin grins on his wedding day.*

Winemaker and Friends of Timberline Board member Darin Ingram comes from a long line of Timberline enthusiasts, from his grandparents who were engaged at the opening winter season in the 1930s, to cross country skiing as a child, to now bringing up his own daughter Haley with a love of the Lodge and slopes.

“As kids, my grandmother would tell us stories about the Lodge and show us pictures with their old wooden skis,” Darin recalls. “So as soon as I could drive, friends and I all started weekend snowboarding and riding the bone zone somewhere around 1990. The Magic Mile was still a two-person chair that took about twenty minutes to climb to the upper terminal. And I think a ticket was \$17 or \$17.50.”

Darin joined the Friends of Timberline Board three years ago this spring, to share the love he has for the Lodge and its history. His family relationship with the Lodge quickly turned into a passion for the story behind the construction and art of the building. “I’m excited to help tell the story of the Lodge and help preserve the past efforts, from building and maintaining it, to the historic archives of documents, photos, film, and artifacts,” he explains. “Who doesn’t like museums and history, especially when it’s in our back yard?” He has been on the go with projects and events to bring awareness to the organization ever since his term on the Board began and is a member of the Membership/Development/Nominating and Special Events Committees.

Darin has also brought Friends several feature auction items including a prototype freecarver and an overnight package to Thunderbird Lodge in Lake Tahoe, and he regularly hosts events for members at his winery, King’s Raven in Oregon City. Last year, the winery hosted a farm to table dinner and sock burning party and a Warren Miller movie night under the stars, and he plans to continue partnering with Friends to offer unique events for its members and all those interested in learning more about Timberline Lodge.



# Dinner at the Lodge!

Dinner speaker: **Nina Olsson**, Art Conservator and President of the Heritage Conservation Group and Nina Olsson Art Conservation

Nina has been an art conservator for over 25 years, working in Europe and the US. She is now living in Portland and is currently working on recovery and conservation of New Deal and WPA masterworks in Oregon. At our dinner Nina will share interesting stories about the wood carvings at Timberline, and the artists who created them.



Darin and his wife Taneha and daughter live in the historic McLoughlin neighborhood of Oregon City, in the historic Jaeger House circa 1892. His family on his father's side has been farming in the region since before that time, and 2017 marked 75 years of his family farming the land of King's Raven Winery. Prior to establishing King's Raven as a winery, Darin worked in web development, software solutions, video production and tech consulting. Now, while still involved in some of those areas, Darin spends much of his time on the farm hands-on in the winemaking process, from planting to harvest, and even tinkering on the vintage farming equipment left behind by two previous generations of farmers.

He draws a parallel between this work and his love for the Lodge and reasons for getting involved with Friends of Timberline. "I'm so excited by the Pacific Northwest and the local culture, and the return to craftsmanship over mass production in so many things, our wine included," Darin

says. "The Lodge, like my antique tractors, is an heirloom for us all to enjoy. The legacy component compels me to be a good shepherd so that our heirs will have these treasures for all time."

Darin hopes to continue his involvement in Friends of Timberline through outreach, marketing, planning and lobbying efforts, and wants to preserve the Lodge's history for future generations.

"I am honored to call myself a Friend of Timberline, and I am happy to be a part of the Clackamas County Mount Hood Territory," he reflects. "This is our home. If we take care of it, it will take care of us."

**TIMBERLINE LODGE**

# MOUNTAIN MUSIC FESTIVAL

MONDAY  
**SEPTEMBER 3RD, 2018**  
*Labor Day*

60 MILES  
DUE EAST OF  
**PORTLAND,**  
ON OREGON'S MAJESTIC  
*Mount Hood*

LIVE MUSIC IN THE OUTDOOR AMPHITHEATRE 12:30 PM 'TILL SUNSET

**FREE ADMISSION**      *Featuring*      **RAIN OR SHINE**

**MOUNTAIN HONEY** • 12:30PM

1:15PM • **KATE POWER & STEVE EINHORN**      **THE TALBOTT BROTHERS** • 2:30PM

**THE CALEB KLAUDER COUNTRY BAND** • 4:00PM

5:30 PM • **CLAIRE LYNCH**

**BRING AN INSTRUMENT AND JOIN THE TABORGRASS PLAYERS ON THE PICKIN PATIO**      **BOYD'S**  
NO DOGS OR PICNIC LUNCHES PLEASE

MORE INFORMATION - 503.272.3134 | [TIMBERLINELODGE.COM](http://TIMBERLINELODGE.COM) | ROOM RESERVATIONS - 503.272.3410



# Friends of Timberline Merchandise



## Limited Edition Timberline Lodge \$325 80th Anniversary Pendleton Blanket

Friends of Timberline celebrates the 80th Anniversary of Timberline Lodge 1937–2017 with this very limited edition version of our Pendleton Blanket. Only 80 blankets were produced and they are individually numbered 1–80 on a leather commemorative patch. To order call or email the Friends of Timberline office. The blankets are available for immediate delivery or pick up from our Portland Office with advanced reservation.

## Collector's Plate \$35

Jennifer Lake collection created for the 75th Anniversary of Timberline Lodge. Limited edition signed and numbered collectors plate featuring "Snowflake Paradise." 8 1/2" diameter with a 22 karat gold rim. Presented in a silk lined box.



To order call FOT  
at 503-295-0827  
or e-mail  
fot1@comcast.net.

All items are plus shipping unless noted. Merchandise can be picked up at the FOT Portland Office by prior arrangement.

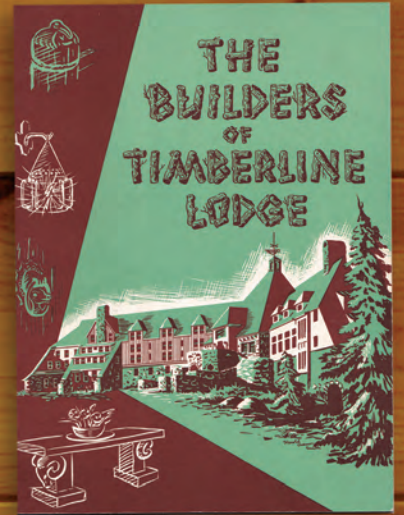


## Friends of Timberline Exclusive Framed Trio of Ray Atkeson Photos \$300

The estate of Ray Atkeson has gifted the use of these three iconic images as a tribute to Timberline Lodge on its 80th anniversary. This is a limited edition of 80, numbered, and custom-framed. Ray's signature is embossed in the lower right corner of the mat.

Overall dimensions 25" x 12."  
Photos are 3-3/4" x 5" and 6-3/4" x 5-1/2."

To order please call the FOT office: 503-295-0827.  
This unique piece of art is created when you order.  
*Please allow two weeks plus shipping time for delivery.*



## The Builders of Timberline Lodge \$50

Created by the Works Progress Administration. Very limited quantity from original 1937 inventory. 30 pages of beautiful drawings by Virginia Darce, Martina Gangle, and Howard Sewall. The text documents the story of building the Lodge as if you were there.

## FOT Silk Scarf \$100

Whether you frame it or wear it, don't miss this opportunity to enjoy the Timberline Silk Scarf. Created by Friends of Timberline to showcase the much loved iconic symbols of Timberline Lodge, this scarf is a limited edition with only a few left. It is a 35" square in silk twill with a hand stitched rolled hem. Be sure to indicate your preferred border color: brown or ivory.

(free shipping in the U.S.)





# Friends we have sadly lost...

## Cal Horn

January 25, 1932–March 12, 2018

Calvin “Cal” Horn, a long-time member of FOT, passed away of natural causes at 86, surrounded by his loving family. Cal grew up in the Dalles and graduated in 1984 from Willamette University, beginning his long career in sales for the paper industry with Crown Zellerbach. Cal, his wife Sally and his three children spent countless time on all aspects of Mt. Hood – the summit, the Palmer Chairlift, Silcox Hut and Timberline Lodge, and were close friends of the Kohnstamm family. In fact, in going through some things after his death, his family found a well-preserved flyer he had kept since October 10, 1981 dedicating the opening of the Wy’east Day Lodge. Cal and Sally rarely if ever missed Friends of Timberline annual meetings, auctions and dinners, and were supporters of FOT’s efforts from the beginning. Cal was an excellent host of festive parties and had a lively sense of humor; he loved to tell a joke and if you knew him, you likely heard it twice. His warmth and generosity will be missed by all who knew him.

## Bill Toney

September 25, 1943–January 23, 2018

William Craig “Bill” Toney passed away at his home in Government Camp. A gentle soul, legendary original craftsman and fine artist, Bill retired for a number of years to his intricate handmade cabin on the mountain. His love for woodworking grew when his father took him to Timberline Lodge as a young boy and sat him down on a wooden chair next to the enormous fireplace in the main lobby. A former art student at Portland State and Brooklyn Museum School, for years Bill performed his magic on wood at his woodworking business with David Simon, also a talented woodworker. “Simon and Toney” later became “Simon, Toney & Fisher Custom Design”, noted for exquisite cabinetry with creative finishes. Their work can be found in the finest contemporary homes in Oregon. As a young man, he was honored with the Max Beckmann Fellowship from the Metropolitan Museum of Art in New York City. His extended family and local friends will miss him.

## Memorial Gifts

Friends of Timberline encourages recognition of loved ones, past or present, by making a donation “in memory of” or “in honor of” those individuals. Donations go to support FOT’s projects at the Lodge. Donations can be attributed or anonymous. Since the last newsletter, Friends of Timberline has received the following donations in memory of:

- **Chuck Scott**, who was a multi-year board member and past President of Friends of Timberline.  
*A gift from: Mike Gentry*
- **Dennis Yamnitsky**, Past Food and Beverage Manager at Timberline Lodge.  
*Gifts from: Philip and Sally Robinson, Pamela Ashland, Jeff Thede and Charles Harp, Jr.*
- **Patrick Dignan**, a true lover of Timberline Lodge and Mount Hood.  
*In honor of his birthday, a group gift from the Dignan family*







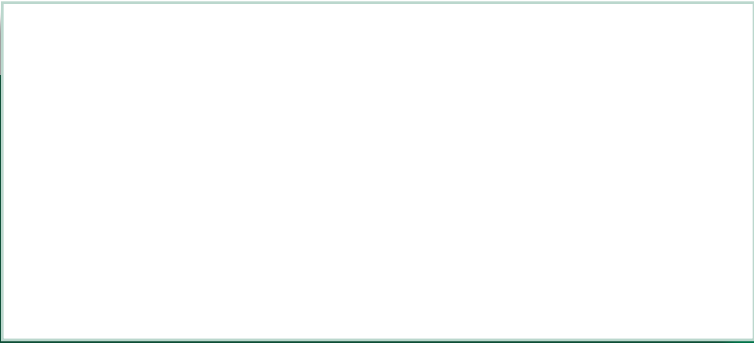
**FRIENDS OF TIMBERLINE**  
PMB 219  
5331 SW MACADAM AVE., SUITE 258  
PORTLAND, OR 97239

Non-Profit Org.  
U.S. Postage  
**PAID**  
Permit No. 2351  
Portland, Oregon

Website: [www.friendsoftimberline.org](http://www.friendsoftimberline.org)  
Email: [fot1@comcast.net](mailto:fot1@comcast.net)

## FRIENDS OF TIMBERLINE MISSION STATEMENT

To preserve and conserve Timberline Lodge, protect its historical integrity and communicate the spirit of its builders by providing counsel and raising funds and coordinating community efforts to accomplish these goals.



## FOT WORK DAY IS EARLY THIS YEAR! CAN YOU HELP ON AUGUST 12?

As our devoted volunteers know, FOT Work Day is an opportunity for all of us who love the Lodge to give a little hands-on help to the upkeep of various aspects of the Lodge areas and furnishings. The Work Day typically is in mid-September. This year, due to scheduling issues, it has been moved to Sunday, August 12. We apologize for the short notice and hope to be able to assemble a sufficient crew.



The task this year is to give a good once-over to the furniture on the Roosevelt Terrace and Balcony which receives heavy use. Some may need repairs or structural tightening up, some may need sanding, and many will need restaining. Other tasks may emerge as well. Shooting for a volunteer crew that will be neither underemployed nor overemployed, we are looking for about twenty volunteers for two to three hours. As usual, all materials will be furnished. We will assemble in the main lobby at 9 a.m. that day. If you would like to help us, please let Mike Gentry know at [michaelgentry04@comcast.net](mailto:michaelgentry04@comcast.net). A nice lunch will be provided by the Lodge.

